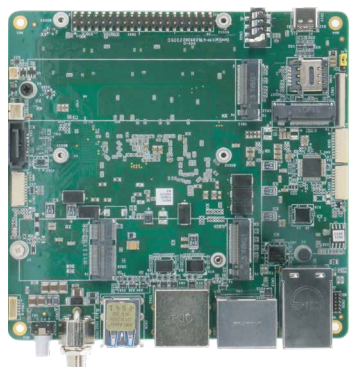


UP Xtreme i14 PRELIMINARY

UP Xtreme i14 Developer Board with 14th Generation Intel® Core™ i7/i5 Processor SoC



Features

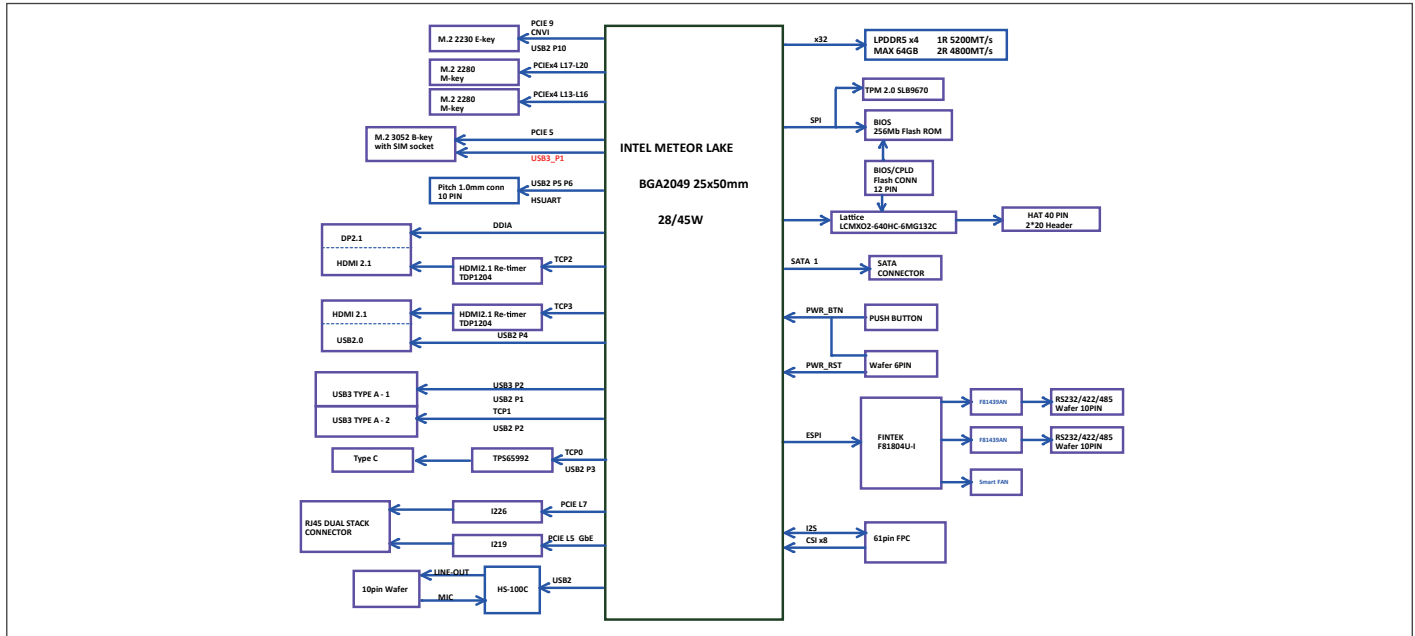
- 14th Generation Intel® Core™ i7/i5 Processor SoC
- Onboard Dual Channel LPDDR5, up to 32GB
- 4 Independent Displays up to 4K at 60Hz
- M.2 2280 M-Key x 2
- M.2 3052 B-Key x 1 (5G)
- M.2 2230 E-Key x 1 (Wi-Fi/BT)
- 2.5GbE x 1, GbE x 1
- USB 4.0 (Type-C)
- Onboard TPM 2.0
- 40-pin HAT connector



Specifications

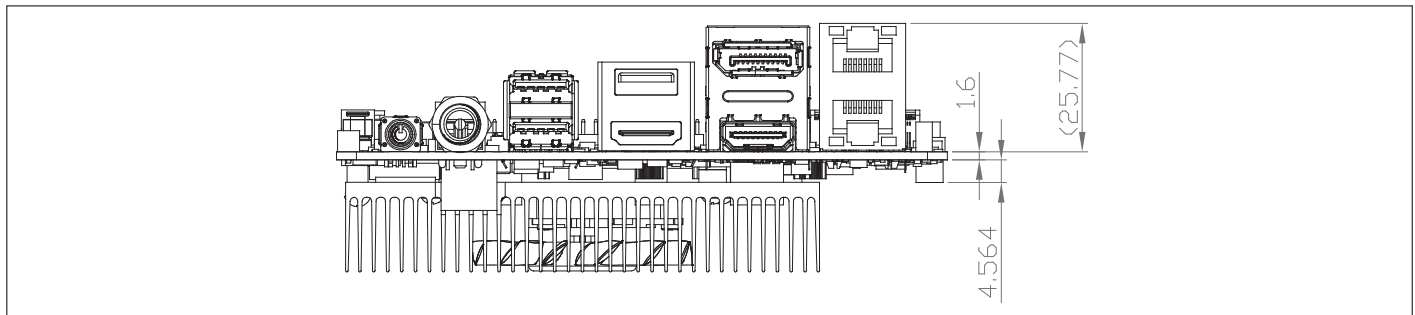
System	
Processor	14th Gen Intel® Core™ Processor SoC
Graphics	Intel® Iris® Xe graphics
Memory	Up to 32GB onboard LPDDR5 (Dual-Channel)
Storage	M.2 2280 M-Key x 2 SATA 6Gb/s x 1
I/O	HDMI 2.1 x 2 DP 2.1 x 1 DP 1.4 via USB 4.0 Type-C x 1 Audio Jack x 1 (Mic-in+Line-out) RS-232/422/485 10-pin header x 2
Camera	MIPI CSI camera via 61pin wafer w/carrier board (optional) HDMI-in via 61pin wafer w/carrier board (optional)
USB	USB 2.0 x 2 (from 10 pin header x 1) USB 2.0 (Type-A) x 1 USB 3.2 Gen 2 (Type-A) x 2 USB 4.0 (Type-C) x 1
Expansion	40-pin GPIO x 1 M.2 2230 E-Key x 1 M.2 2280 M-Key x 2 SATA 6Gb/s x 1 M.2 3052 B-Key x 1 Nano SIM Slot x 1
Display Interface	HDMI 2.1 x 2 DP 2.1 x 1 DP 1.4 via USB 4.0 Type-C x 1
Ethernet	Intel® I226-IT x 1 (TSN), Intel® I219 x 1 (vPRO)
Security	Onboard TPM 2.0
RTC	Yes
OS Support	Windows® 11 Enterprise 2021 LTSC Ubuntu 22.04 Yocto 4.0
Power Requirement	
Power	9-24V DC-in (Lockable plug)
Power Supply Type	AT/ATX (ATX as default)
Power Consumption (Typical)	TBD
Mechanical	
Dimension	4.74" x 4.82" (120.35mm x 122.5mm)
Net Weight	12.7 lb. (0.36Kg)
Gross Weight	TBD
Environment	
Operating Temperature	With Cooler: 32°F ~ 140°F (0°C ~ 60°C), 0.5m/s airflow
Operation Humidity	0% ~ 90% relative humidity, non-condensing
MTBF	TBD
Certification	CE/FCC Class A, RoHS Compliant, REACH

Block Diagram



Dimension

Unit: mm



Packing List

- UP Xtreme i14

Ordering Information

Part number	CPU	CORE	MEMORY	HEATSINK
UPX-MTLI5-A10-1600	Meteor Lake -H(28W), i5	6P+8E	16GB	FAN
UPX-MTLI7-A10-1600	Meteor Lake -H(28W), i7	4P+8E	16GB	FAN

Optional Accessories

Part Number	Description
9741364A00	Wireless LAN Kit M.2 2230 802.11ac/a/b/g/n + BT4.0,2T2R, with 2 sets of cable & antenna (Enli.QCNFA364A)
9651926001	(TF).M.2 2230 WiFi Kit.802.11ac.2.4G/5G,W/BT Intel.9260.NGWG.NV,958867 w/2 cable & antenna
9651210000	Wireless LAN Kit M.2 2230 802.11ac/a/b/g/n + BT5.2,2.4G/5G/6G, with 2 sets of cable & antenna (Intel AX210)
1702150155	SATA power cable (15cm)
1702150306	SATA power cable (30cm)